

STANDARD DEPARTURE
CHART - INSTRUMENT
(SID) - ICAO

TRANSITION ALTITUDE
10000 FT

SHYMKENT TOWER 125.9
SHYMKENT ATIS (EN) 119.2
SHYMKENT ATIS (RU) 126.6

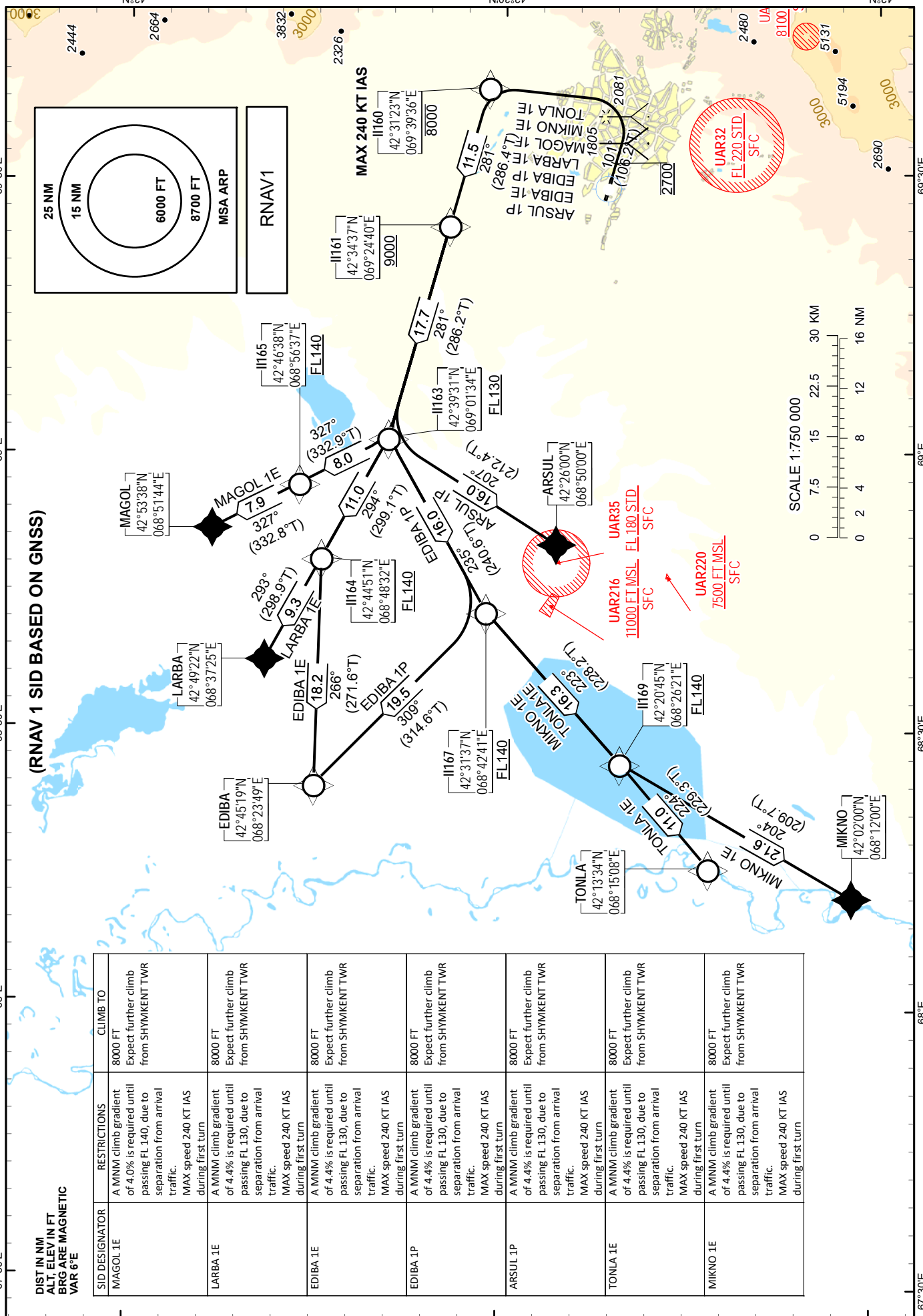
ARSUL 1P, EDIBA 1E/1P,
LARBA 1E, MAGOL 1E,
MIKNO 1E, TONLA 1E.

SHYMKENT
RWY 10

CHANGE: Editorial.

DIST IN NM
ALT. ELEV IN FT
BRG ARE MAGNETIC
VAR 6°E

SID DESIGNATOR	RESTRICTIONS	CLIMB TO
MAGOL 1E	A MNM climb gradient of 4.0% is required until passing FL 140, due to separation from arrival traffic. MAX speed 240 KT IAS during first turn	8000 FT Expect further climb from SHYMKENT TWR
LARBA 1E	A MNM climb gradient of 4.4% is required until passing FL 130, due to separation from arrival traffic. MAX speed 240 KT IAS during first turn	8000 FT Expect further climb from SHYMKENT TWR
EDIBA 1E	A MNM climb gradient of 4.4% is required until passing FL 130, due to separation from arrival traffic. MAX speed 240 KT IAS during first turn	8000 FT Expect further climb from SHYMKENT TWR
EDIBA 1P	A MNM climb gradient of 4.4% is required until passing FL 130, due to separation from arrival traffic. MAX speed 240 KT IAS during first turn	8000 FT Expect further climb from SHYMKENT TWR
ARSUL 1P	A MNM climb gradient of 4.4% is required until passing FL 130, due to separation from arrival traffic. MAX speed 240 KT IAS during first turn	8000 FT Expect further climb from SHYMKENT TWR
TONLA 1E	A MNM climb gradient of 4.4% is required until passing FL 130, due to separation from arrival traffic. MAX speed 240 KT IAS during first turn	8000 FT Expect further climb from SHYMKENT TWR
MIKNO 1E	A MNM climb gradient of 4.4% is required until passing FL 130, due to separation from arrival traffic. MAX speed 240 KT IAS during first turn	8000 FT Expect further climb from SHYMKENT TWR



TABULAR DESCRIPTION

ARSUL 1P											
Serial Number	Path Descriptor	Waypoint Identifier	Fly - over	Course °M(°T)	Magnetic Variation(°)	Distance NM	Turn Direction	Altitude FT	Speed KT	VPA (°)	Navigation Specification
10	CA	-	-	101(106.2)	+5.5	-	-	@2700	-	-	RNAV 1
20	DF	II160	-	-	+5.5	-	L	-8000	-240	-	RNAV 1
30	TF	II161	-	281(286.4)	+5.5	11.5	-	+9000	-	-	RNAV 1
40	TF	II163	-	281(286.2)	+5.5	17.7	-	+FL130	-	2.5	RNAV 1
50	TF	ARSUL	-	207(212.4)	+5.5	16.0	L	-	-	-	RNAV 1
EDIBA 1E											
Serial Number	Path Descriptor	Waypoint Identifier	Fly - over	Course °M(°T)	Magnetic Variation(°)	Distance NM	Turn Direction	Altitude FT	Speed KT	VPA (°)	Navigation Specification
10	CA	-	-	101(106.2)	+5.5	-	-	@2700	-	-	RNAV 1
20	DF	II160	-	-	+5.5	-	L	-8000	-240	-	RNAV 1
30	TF	II161	-	281(286.4)	+5.5	11.5	-	+9000	-	-	RNAV 1
40	TF	II163	-	281(286.2)	+5.5	17.7	-	+FL130	-	2.5	RNAV 1
50	TF	II164	-	294(299.1)	+5.5	11.0	R	+FL140	-	0.9	RNAV 1
60	TF	EDIBA	-	266(271.6)	+5.5	18.2	L	-	-	-	RNAV 1
EDIBA 1P											
Serial Number	Path Descriptor	Waypoint Identifier	Fly - over	Course °M(°T)	Magnetic Variation(°)	Distance NM	Turn Direction	Altitude FT	Speed KT	VPA (°)	Navigation Specification
10	CA	-	-	101(106.2)	+5.5	-	-	@2700	-	-	RNAV 1
20	DF	II160	-	-	+5.5	-	L	-8000	-240	-	RNAV 1
30	TF	II161	-	281(286.4)	+5.5	11.5	-	+9000	-	-	RNAV 1
40	TF	II163	-	281(286.2)	+5.5	17.7	-	+FL130	-	2.5	RNAV 1
50	TF	II167	-	235(240.6)	+5.5	16.0	L	+FL140	-	0.6	RNAV 1
60	TF	EDIBA	-	309(314.6)	+5.5	19.5	R	-	-	-	RNAV 1
LARBA 1E											
Serial Number	Path Descriptor	Waypoint Identifier	Fly - over	Course °M(°T)	Magnetic Variation(°)	Distance NM	Turn Direction	Altitude FT	Speed KT	VPA (°)	Navigation Specification
10	CA	-	-	101(106.2)	+5.5	-	-	@2700	-	-	RNAV 1
20	DF	II160	-	-	+5.5	-	L	-8000	-240	-	RNAV 1
30	TF	II161	-	281(286.4)	+5.5	11.5	-	+9000	-	-	RNAV 1
40	TF	II163	-	281(286.2)	+5.5	17.7	-	+FL130	-	2.5	RNAV 1
50	TF	II164	-	294(299.1)	+5.5	11.0	R	+FL140	-	0.9	RNAV 1
60	TF	LARBA	-	293(298.9)	+5.5	9.3	-	-	-	-	RNAV 1
MAGOL 1E											
Serial Number	Path Descriptor	Waypoint Identifier	Fly - over	Course °M(°T)	Magnetic Variation(°)	Distance NM	Turn Direction	Altitude FT	Speed KT	VPA (°)	Navigation Specification
10	CA	-	-	101(106.2)	+5.5	-	-	@2700	-	-	RNAV 1
20	DF	II160	-	-	+5.5	-	L	-8000	-240	-	RNAV 1
30	TF	II161	-	281(286.4)	+5.5	11.5	-	+9000	-	-	RNAV 1
40	TF	II163	-	281(286.2)	+5.5	17.7	-	+FL130	-	-	RNAV 1
50	TF	II165	-	327(332.9)	+5.5	8.0	R	+FL140	-	2.3	RNAV 1
60	TF	MAGOL	-	327(332.8)	+5.5	7.9	-	-	-	-	RNAV 1
MIKNO 1E											
Serial Number	Path Descriptor	Waypoint Identifier	Fly - over	Course °M(°T)	Magnetic Variation(°)	Distance NM	Turn Direction	Altitude FT	Speed KT	VPA (°)	Navigation Specification
10	CA	-	-	101(106.2)	+5.5	-	-	@2700	-	-	RNAV 1
20	DF	II160	-	-	+5.5	-	L	-8000	-240	-	RNAV 1
30	TF	II161	-	281(286.4)	+5.5	11.5	-	+9000	-	-	RNAV 1
40	TF	II163	-	281(286.2)	+5.5	17.7	-	+FL130	-	2.5	RNAV 1
50	TF	II167	-	235(240.6)	+5.5	16.0	L	+FL140	-	-	RNAV 1
60	TF	II169	-	223(228.2)	+5.5	16.3	L	+FL140	-	0.3	RNAV 1
70	TF	MIKNO	-	204(209.7)	+5.5	21.6	L	-	-	-	RNAV 1
TONLA 1E											
Serial Number	Path Descriptor	Waypoint Identifier	Fly - over	Course °M(°T)	Magnetic Variation(°)	Distance NM	Turn Direction	Altitude FT	Speed KT	VPA (°)	Navigation Specification
10	CA	-	-	101(106.2)	+5.5	-	-	@2700	-	-	RNAV 1
20	DF	II160	-	-	+5.5	-	L	-8000	-240	-	RNAV 1
30	TF	II161	-	281(286.4)	+5.5	11.5	-	+9000	-	-	RNAV 1
40	TF	II163	-	281(286.2)	+5.5	17.7	-	+FL130	-	2.5	RNAV 1
50	TF	II167	-	235(240.6)	+5.5	16.0	L	+FL140	-	-	RNAV 1
60	TF	II169	-	223(228.2)	+5.5	16.3	L	+FL140	-	0.3	RNAV 1
70	TF	TONLA	-	224(229.3)	+5.5	11.0	-	-	-	-	RNAV 1

WAYPOINT LIST

WPT	COORD	
ARSUL	422600.00N	0685000.00E
DEP	422139.35N	0692940.74E
EDIBA	424519.00N	0682349.00E
II160	423123.34N	0693935.94E
II161	423436.62N	0692440.23E
II163	423931.18N	0690134.42E
II164	424451.31N	0684831.58E
II165	424638.38N	0685637.20E
II167	423137.28N	0684241.25E
II169	422045.45N	0682621.07E
LARBA	424922.00N	0683725.00E
MAGOL	425338.00N	0685144.00E
MIKNO	420200.00N	0681200.00E
TONLA	421334.00N	0681508.00E